

Query Crash List

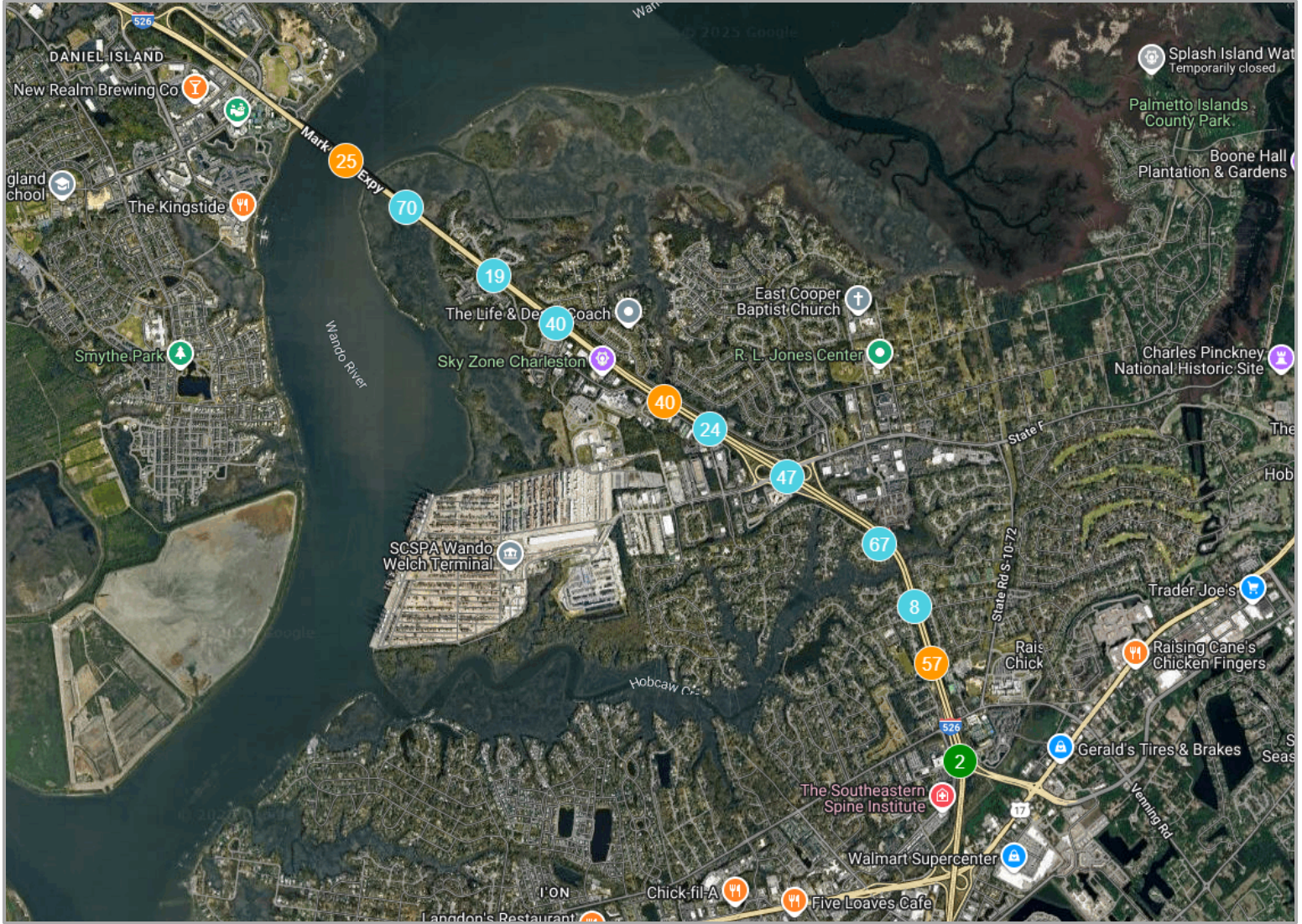
CHARLESTON

AADT: 67514

Functional Class: Urban - Principal Arterial - Interstate

01/01/2020 through 12/31/2024

MP 23.81 to 29.12 (Length = 5.31 miles)



Crashes by Injury Class

Fatal Crashes:	0
Serious Injury Crashes:	4
Other Injury Crashes:	100
PDO Crashes:	295
Total:	399

Crashes by Manner of Collision

Rear End:	219
Angle:	24
Sideswipe:	69
Head On:	2
Run off Road:	77
Animal:	6
Bicycle:	0
Pedestrian:	1
Other:	1
Total:	399

Special Contributing Factors

Night:	100
Day:	299
Not Reported:	0
Wet:	58
Dry:	341
Not Reported:	0

Crash Summary

Query Crash List
CHARLESTON

AADT: 67514

Functional Class: Urban - Principal Arterial - Interstate

01/01/2020 through 12/31/2024

MP 23.81 to 29.12 (Length = 5.31 miles)

Statistics

Fatal Crashes:	0
Fatal Injuries:	0
Serious Crashes:	4
Serious Injuries:	5
Other Injury Crashes:	100
Other Injuries:	88
Property Damage Crashes:	295
Total Crashes:	399

Crash Location

Intersections:	52
Midblock Crashes:	347
Urban Crashes:	399
Rural Crashes:	0
MPO Crashes:	399
COG Crashes:	0

Manner of Collision

Angle:	24
Backed Into:	1
Head On:	2
Non Collision:	84
Rear End:	219
Rear To Rear:	0
Sideswipe, Opposite Direction:	0
Sideswipe, Same Direction:	69
Unknown:	0

Junction Type

Crossover:	1
Driveway:	0
Five Or More Points:	0
Four Way Intersection:	0
Non-Junction:	394
Railway Grade Crossing:	0
Shared Use Path Or Trails:	0
T-Intersection:	2
Traffic Circle:	0
Not Reported:	0
Unknown:	1
Y-Intersection:	1

Number of Units

1:	74
2:	290
3:	27
4+:	8

Crashes Involving

Pedestrians:	1
Bicycles:	0
Motorcycles:	5
Truck Tractors:	45
Fixed Objects:	84
Workzones:	8

Road Conditions

Dry:	341
Wet:	57
Snow:	0
Slush:	0
Ice:	0
Contaminate:	0
Water (standing):	1
Other:	0
Not Reported:	0

Light Conditions

Day:	299
Dawn:	9
Dusk:	5
Dark (Unspecified Lighting):	20
Dark (Street Lamp):	12
Dark (Street Lamp Not Lit):	20
Dark (No Lights):	34
Not Reported:	0

Weather Conditions

Blowing Sand, Oil, Dirt, Or Snow:	0
Clear:	324
Cloudy:	29
Fog, Smoke, Smog:	0
Rain:	46
Severe Crosswinds:	0
Sleet/Hail:	0
Snow:	0
Not Reported:	0
Unknown:	0

Traffic Control Type

Cross Bucks Only:	0
Flashing Beacon:	0
Flashing Traffic Signal:	1
None:	383
Officer Or Flagman:	0
Oncoming Emergency:	1
Other Warning Signs:	0
Pavement Markings (Only):	7
Railroad (Bucks And Lights):	0
Railroad (Bucks, Lights):	0
School Sign:	0
Stop And Go Light:	1
Stop Sign:	0
Unknown:	0
Work Zone:	5
Yield Sign:	1

Crash Harmful Event

Tree:	3
Utility Pole:	0
Other (Post, Pole, Support, ..):	1
Light/Luminance Support:	0
Overhead Sign Support:	0
Culvert:	0
Ditch:	6
Equipment:	0
Curb:	0
Embankment:	2
Guardrail End:	4
Fence:	0
Mail Box:	0
Highway Traffic Sign Post:	1
Guardrail Face:	20
Bridge Overhead Structure:	0
Bridge Parapet End:	0
Bridge Pier or Abutment:	0
Bridge Rail:	15
Impact Attenuator/Crash Cushion:	1
Median Barrier:	26
Other (Wall, Building, Tunnel, etc.):	4
Work Zone Maintenance Equip:	0
Other (fixed):	3
Unknown (fixed):	1
Animal (Deer Only):	5
Animal (all other):	1
Motor Unit (Stopped):	116
Motor Unit (Other Roadway):	0
Motor Unit (Parked):	2
Railway Unit:	0
Work Zone Maintenance Equip:	0
Other Movable Object:	10
Unknown Movable Object:	0
Cross Median/Center:	0
Spill (2-wheeled Units):	0
Ran off Road Left:	4
Ran off Road Right:	4
Overturn/Rollover:	1
Immersion:	0
Cargo/Equipment Loss or Shift:	0
Downhill Runaway:	0
Equipment Failure:	2
Fire/Explosion:	0
Jackknife:	0
Separation of Units:	0
Other - non Collision:	1
Unknown - non Collision:	0
Motor Unit (In Transport):	165
Undetermined:	0

Query Crash List
CHARLESTON

AADT: 67514

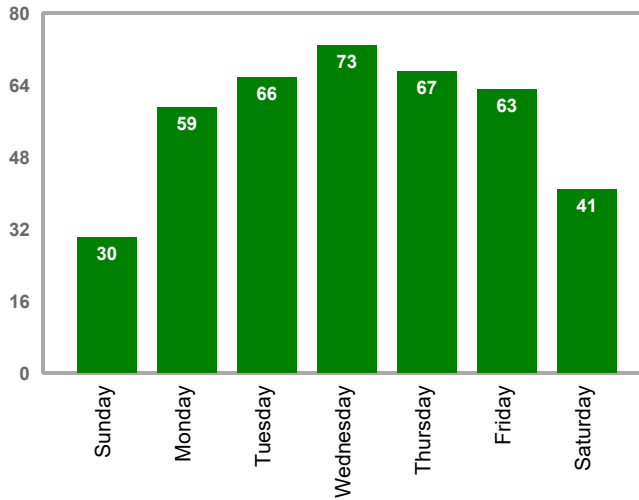
Functional Class: Urban - Principal Arterial - Interstate
01/01/2020 through 12/31/2024

MP 23.81 to 29.12 (Length = 5.31 miles)

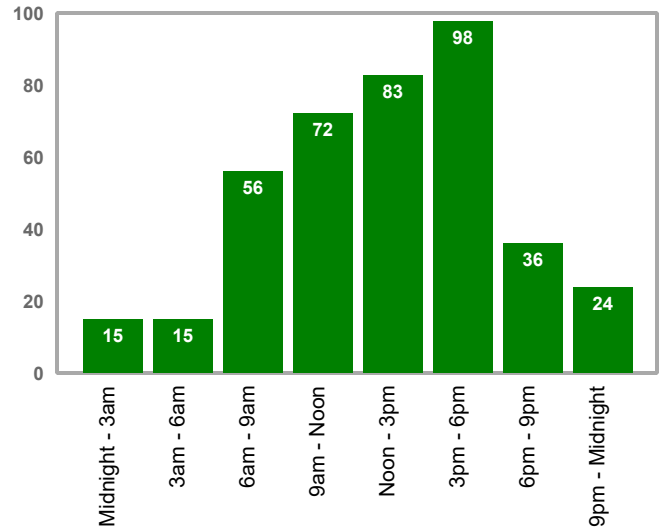
Yearly Comparison

Year	2020	2021	2022	2023	2024	Total
Rear End	31	24	55	65	44	219
Angle	6	6	4	2	6	24
Sideswipe	17	11	11	16	14	69
Head On	0	1	1	0	0	2
Run Off Road	12	18	15	17	15	77
Animal	1	0	1	3	1	6
Bicycle	0	0	0	0	0	0
Pedestrian	0	0	0	1	0	1
Other	0	0	1	0	0	1
	67	60	88	104	80	399

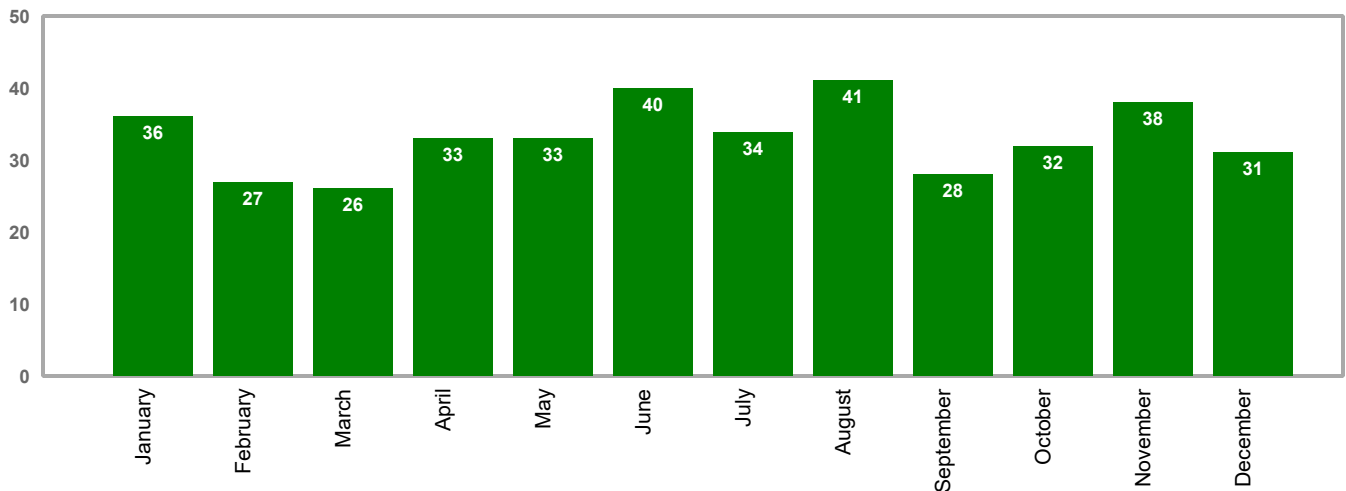
Day of the Week



Time of Day



Month of Year



Query Crash List
CHARLESTON

AADT: 67514

Functional Class: Urban - Principal Arterial - Interstate
01/01/2020 through 12/31/2024

MP 23.81 to 29.12 (Length = 5.31 miles)

Total Crashes: 399 Fatal Crashes: 0 Serious Inj Crashes: 4 Other Inj Crashes: 100 PDO Crashes: 295 Light: 299 Dark: 100 Dry: 341 Wet: 57

OBS	Crash #	Date	Main	MP	Base	Second	BDO	Max Inj	Light	SFC	MAC	Probable Cause	Harmful Event
1	20546443	09/02/20	I- 526	25.106	L- 2118	S- 58	0.614	0	night	dry	none	Under the Influence	Median Barrier
2	23519976	04/04/23	I- 526	25.107	L- 2118	S- 58	0.613	0	night	dry	RE	Failure to Yield RoW	Motor Unit (In Transpo
3	22513673	02/10/22	I- 526	25.11	L- 2118	S- 58	0.61	1	day	dry	RE	Following too Closely	Motor Unit (In Transpo
4	22589053	12/13/22	I- 526	25.116	L- 2118	S- 58	0.604	0	night	dry	RE	Following too Closely	Motor Unit (Stopped)
5	22541834	06/17/22	I- 526	25.128	L- 2118	S- 58	0.591	0	day	dry	RE	Following too Closely	Motor Unit (Stopped)
6	22522253	04/12/22	I- 526	25.13	L- 2118	S- 58	0.589	0	day	dry	RE	Distracted/Inattention	Motor Unit (Stopped)
7	23297955	10/30/23	I- 526	25.13	L- 2118	S- 58	0.589	0	day	dry	RE	Other Improper Action	Motor Unit (Stopped)
8	22579509	11/22/22	I- 526	25.132	L- 2118	S- 58	0.588	0	day	dry	RE	Following too Closely	Motor Unit (In Transpo
9	22506468	01/24/22	I- 526	25.134	L- 2118	S- 58	0.586	1	night	dry	Angle	Improper Lane use/change	Guardrail Face
10	22545107	07/15/22	I- 526	25.135	L- 2118	S- 58	0.585	0	day	dry	RE	Following too Closely	Motor Unit (Stopped)
11	24542443	06/16/24	I- 526	25.138	L- 2118	S- 58	0.581	0	night	dry	RE	Unknown	Motor Unit (In Transpo
12	21572276	10/14/21	I- 526	25.139	L- 2118	S- 58	0.58	0	day	dry	RE	Following too Closely	Motor Unit (Stopped)
13	23544364	06/26/23	I- 526	25.143	L- 2118	S- 58	0.576	1	day	dry	RE	Following too Closely	Motor Unit (In Transpo
14	20551008	09/21/20	I- 526	25.143	L- 2118	S- 58	0.576	1	night	dry	Angle	Failure to Yield RoW	Median Barrier
15	24505976	01/10/24	I- 526	25.147	L- 2118	S- 58	0.572	0	day	dry	SS	Improper Lane use/change	Motor Unit (In Transpo
16	24538630	06/15/24	I- 526	25.149	L- 2118	S- 58	0.57	0	day	dry	none	Aggressive Operation	Bridge Rail
17	21542380	06/14/21	I- 526	25.155	L- 2118	S- 58	0.564	0	day	dry	none	Ran off Road	Other (fixed)
18	22564720	10/05/22	I- 526	25.158	S- 97	S- 58	5	0	day	dry	RE	Following too Closely	Motor Unit (In Transpo
19	24502565	01/17/24	I- 526	25.159	L- 2118	S- 58	0.56	1	night	dry	RE	Under the Influence	Other (Wall, Building,
20	22521618	04/05/22	I- 526	25.159	L- 2118	S- 58	0.56	0	night	dry	none	Over-steering	Bridge Rail
21	24500262	01/04/24	I- 526	25.17	L- 2118	S- 58	0.549	3	night	dry	RE	Following too Closely	Bridge Rail
22	24529028	05/09/24	I- 526	25.172	L- 2118	S- 58	0.547	2	night	dry	RE	Excessive Speed	Median Barrier
23	20548263	09/14/20	I- 526	25.177	L- 2118	S- 58	0.542	0	night	dry	Angle	Improper Lane use/change	Motor Unit (In Transpo
24	22589362	12/27/22	I- 526	25.183	L- 2118	S- 58	0.536	0	day	dry	none	Debris	Other Movable Object
25	23555592	08/25/23	I- 526	25.189	L- 2118	S- 58	0.53	2	day	dry	Angle	Driving too Fast for Con	Motor Unit (Stopped)
26	23568535	10/11/23	I- 526	25.194	L- 2118	S- 58	0.525	0	day	dry	RE	Following too Closely	Motor Unit (In Transpo
27	23560726	09/13/23	I- 526	25.196	L- 2118	S- 58	0.523	0	day	wet	RE	Following too Closely	Motor Unit (Stopped)
28	22534809	05/14/22	I- 526	25.198	L- 2118	S- 58	0.521	1	day	dry	RE	Following too Closely	Motor Unit (Stopped)
29	23512687	02/11/23	I- 526	25.204	L- 2118	S- 58	0.515	0	night	wet	SS	Other (vehicle defect)	Motor Unit (Parked)
30	22578177	11/16/22	I- 526	25.209	L- 2118	S- 58	0.51	1	night	dry	none	Other Improper Action	Bridge Rail
31	24566552	10/02/24	I- 526	25.233	L- 2118	S- 58	0.485	1	day	dry	Angle	Over-steering	Bridge Rail
32	23556996	08/22/23	I- 526	25.241	L- 2118	S- 58	0.477	0	day	dry	RE	Driving too Fast for Con	Motor Unit (In Transpo
33	22579839	11/19/22	I- 526	25.242	S- 97	S- 58	3	0	day	dry	RE	Following too Closely	Motor Unit (In Transpo
34	24543555	07/03/24	I- 526	25.257	L- 2118	S- 58	0.461	0	day	dry	RE	Following too Closely	Motor Unit (Stopped)
35	24531955	05/25/24	I- 526	25.262	L- 2118	S- 58	0.457	0	day	wet	none	Driving too Fast for Con	Bridge Rail
36	24538596	06/16/24	I- 526	25.262	L- 2118	S- 58	0.457	0	night	dry	none	Under the Influence	Median Barrier
37	21543708	07/02/21	I- 526	25.265	L- 2118	S- 58	0.453	0	day	dry	SS	Under the Influence	Motor Unit (In Transpo
38	20532392	06/24/20	I- 526	25.269	L- 2118	S- 58	0.45	1	day	dry	SS	Improper Lane use/change	Motor Unit (In Transpo
39	24533401	05/30/24	I- 526	25.288	L- 2118	S- 58	0.43	1	day	dry	RE	Following too Closely	Motor Unit (Stopped)
40	24572851	10/23/24	I- 526	25.296	L- 2118	S- 58	0.422	0	day	dry	RE	Following too Closely	Motor Unit (In Transpo

Query Crash List
CHARLESTON

AADT: 67514

Functional Class: Urban - Principal Arterial - Interstate
01/01/2020 through 12/31/2024

MP 23.81 to 29.12 (Length = 5.31 miles)

Total Crashes: 399 Fatal Crashes: 0 Serious Inj Crashes: 4 Other Inj Crashes: 100 PDO Crashes: 295 Light: 299 Dark: 100 Dry: 341 Wet: 57

OBS	Crash #	Date	Main	MP	Base	Second	BDO	Max Inj	Light	SFC	MAC	Probable Cause	Harmful Event
41	23527936	04/04/23	I- 526	25.302	L- 2118	S- 58	0.416	0	day	dry	RE	Following too Closely	Motor Unit (Stopped)
42	23539660	06/16/23	I- 526	25.314	L- 2118	S- 58	0.404	0	day	dry	RE	Following too Closely	Motor Unit (In Transpo
43	21552694	08/01/21	I- 526	25.315	L- 2118	S- 58	0.403	1	night	wet	Angle	Under the Influence	Bridge Rail
44	20517522	03/17/20	I- 526	25.328	L- 2118	S- 58	0.39	0	day	dry	RE	Following too Closely	Motor Unit (In Transpo
45	21525438	04/20/21	I- 526	25.33	L- 2118	S- 58	0.388	2	night	dry	SS	Failure to Yield RoW	Motor Unit (In Transpo
46	24514837	03/06/24	I- 526	25.336	L- 2118	S- 58	0.382	2	night	wet	SS	Improper Lane use/change	Ran off Road Right
47	22534450	04/08/22	I- 526	25.338	L- 2118	S- 58	0.38	0	day	dry	SS	Improper Lane use/change	Motor Unit (In Transpo
48	21549029	07/20/21	I- 526	25.342	L- 2118	S- 58	0.376	2	day	wet	SS	Aggressive Operation	Motor Unit (Stopped)
49	21534947	05/27/21	I- 526	25.377	L- 2118	S- 58	0.341	1	day	dry	none	Unknown	Unknown (fixed)
50	20509718	02/08/20	I- 526	25.381	L- 2118	S- 58	0.336	1	night	dry	RE	Distracted/Inattention	Motor Unit (In Transpo
51	22525440	04/25/22	I- 526	25.393	L- 2118	S- 58	0.325	1	day	dry	RE	Following too Closely	Motor Unit (In Transpo
52	22518477	04/01/22	I- 526	25.395	L- 2118	S- 58	0.322	0	day	dry	RE	Following too Closely	Motor Unit (In Transpo
53	22588472	11/19/22	I- 526	25.402	L- 2118	S- 58	0.316	1	day	dry	none	Improper Lane use/change	Other (Wall, Building,
54	22523840	04/14/22	I- 526	25.403	L- 2118	S- 58	0.314	2	night	dry	RE	Following too Closely	Motor Unit (In Transpo
55	22555403	08/18/22	I- 526	25.405	L- 2118	S- 58	0.312	0	day	wet	SS	Failure to Yield RoW	Motor Unit (In Transpo
56	20502906	01/09/20	I- 526	25.434	L- 2118	S- 58	0.283	0	day	dry	none	Tires/Wheel	Median Barrier
57	22569427	10/24/22	I- 526	25.446	S- 97	S- 58	89	0	day	dry	RE	Following too Closely	Motor Unit (In Transpo
58	23581554	12/04/23	I- 526	25.45	S- 97	S- 58	2	0	day	dry	Angle	Improper Lane use/change	Motor Unit (In Transpo
59	21551332	08/14/21	I- 526	25.47	L- 2118	S- 58	0.247	0	day	dry	none	Debris	Other Movable Object
60	22576833	11/14/22	I- 526	25.474	L- 2118	S- 58	0.243	1	day	dry	RE	Distracted/Inattention	Motor Unit (In Transpo
61	24524522	04/25/24	I- 526	25.484	S- 97	S- 58	75	0	day	dry	SS	Improper Lane use/change	Motor Unit (In Transpo
62	24525302	04/19/24	I- 526	25.504	S- 97	S- 58	100	0	day	dry	RE	Following too Closely	Motor Unit (In Transpo
63	20546982	09/04/20	I- 526	25.504	L- 2118	S- 58	0.213	0	day	dry	none	Driving too Fast for Con	Guardrail Face
64	20532390	06/21/20	I- 526	25.505	L- 2118	S- 58	0.212	0	day	dry	RE	Distracted/Inattention	Motor Unit (Stopped)
65	22555629	08/19/22	I- 526	25.508	L- 2118	S- 58	0.208	2	night	wet	RE	Other Improper Action	Motor Unit (Stopped)
66	24556651	09/03/24	I- 526	25.51	L- 2118	S- 58	0.206	2	day	dry	Angle	Improper Lane use/change	Median Barrier
67	22588499	12/16/22	I- 526	25.529	L- 2118	S- 58	0.188	0	day	dry	SS	Improper Lane use/change	Motor Unit (In Transpo
68	23576639	11/13/23	I- 526	25.537	L- 2118	S- 58	0.18	0	night	dry	RE	Distracted/Inattention	Motor Unit (Stopped)
69	22521635	04/06/22	I- 526	25.545	L- 2118	S- 58	0.171	0	day	wet	RE	Driving too Fast for Con	Motor Unit (Stopped)
70	21534610	06/14/21	I- 526	25.55	L- 2118	S- 58	0.166	0	day	dry	SS	Improper Lane use/change	Motor Unit (In Transpo
71	22542430	06/07/22	I- 526	25.553	L- 2118	S- 58	0.163	0	day	wet	none	Driving too Fast for Con	Guardrail Face
72	22502810	01/20/22	I- 526	25.554	L- 2118	S- 58	0.162	0	day	dry	RE	Following too Closely	Motor Unit (Stopped)
73	24521294	03/24/24	I- 526	25.573	L- 2118	S- 58	0.143	0	night	dry	SS	Unknown	Motor Unit (In Transpo
74	23555805	08/25/23	I- 526	25.574	L- 2118	S- 58	0.142	0	day	dry	RE	Following too Closely	Motor Unit (Stopped)
75	20512903	02/09/20	I- 526	25.599	L- 2118	S- 58	0.117	1	day	dry	RE	Following too Closely	Motor Unit (Stopped)
76	23554823	08/16/23	I- 526	25.615	L- 2118	S- 58	0.1	0	night	dry	SS	Failure to Yield RoW	Bridge Rail
77	22503056	01/20/22	I- 526	25.626	L- 2118	S- 58	0.09	0	day	dry	RE	Following too Closely	Motor Unit (Stopped)
78	20511919	02/15/20	I- 526	25.626	L- 2118	S- 58	0.09	2	night	dry	RE	Under the Influence	Bridge Rail
79	20535076	07/01/20	I- 526	25.643	L- 2118	S- 58	0.072	1	night	dry	none	Over-steering	Guardrail Face
80	22569086	10/05/22	I- 526	25.644	L- 2118	S- 58	0.072	2	day	dry	RE	Following too Closely	Motor Unit (Stopped)

Query Crash List
CHARLESTON

AADT: 67514

Functional Class: Urban - Principal Arterial - Interstate
01/01/2020 through 12/31/2024

MP 23.81 to 29.12 (Length = 5.31 miles)

Total Crashes: 399 Fatal Crashes: 0 Serious Inj Crashes: 4 Other Inj Crashes: 100 PDO Crashes: 295 Light: 299 Dark: 100 Dry: 341 Wet: 57

OBS	Crash #	Date	Main	MP	Base	Second	BDO	Max Inj	Light	SFC	MAC	Probable Cause	Harmful Event
81	22585793	11/02/22	I- 526	25.651	L- 2118	S- 58	0.064	0	day	dry	SS	Distracted/Inattention	Motor Unit (In Transpo
82	23504544	01/06/23	I- 526	25.66	L- 2118	S- 58	0.055	0	day	dry	RE	Following too Closely	Motor Unit (In Transpo
83	23560736	09/11/23	I- 526	25.662	L- 2118	S- 58	0.054	1	day	dry	RE	Following too Closely	Motor Unit (Stopped)
84	23576868	11/06/23	I- 526	25.67	L- 2118	S- 58	0.045	1	night	dry	none	Animal in Road	Animal (Deer Only)
85	21536968	05/26/21	I- 526	25.686	L- 2118	S- 58	0.029	1	day	dry	Angle	Improper Lane use/change	Motor Unit (In Transpo
86	23576442	11/02/23	I- 526	25.693	L- 2118	S- 58	0.022	0	day	dry	RE	Following too Closely	Motor Unit (In Transpo
87	24557443	09/03/24	I- 526	25.694	L- 2118	S- 58	0.021	0	day	dry	Angle	Distracted/Inattention	Motor Unit (In Transpo
88	22570930	09/26/22	I- 526	25.708	L- 2118	S- 58	0.007	2	day	dry	RE	Power Plant	Motor Unit (Stopped)
89	22582032	11/18/22	I- 526	25.735	L- 2118	S- 97	0.02	0	day	dry	RE	Following too Closely	Motor Unit (Stopped)
90	21545583	07/16/21	I- 526	25.738	L- 2118	S- 97	0.023	0	day	dry	RE	Following too Closely	Motor Unit (In Transpo
91	23543333	06/23/23	I- 526	25.769	L- 2118	S- 97	0.054	0	night	wet	RE	Driving too Fast for Con	Motor Unit (In Transpo
92	22531473	05/13/22	I- 526	25.776	L- 2118	S- 97	0.062	2	night	dry	Angle	Following too Closely	Motor Unit (In Transpo
93	24518701	03/28/24	I- 526	25.783	L- 2118	S- 97	0.068	1	day	dry	none	Ran off Road	Median Barrier
94	23539026	06/06/23	I- 526	25.8	L- 2118	S- 97	0.086	0	day	dry	SS	Distracted/Inattention	Motor Unit (In Transpo
95	20557836	10/26/20	I- 526	25.809	L- 2118	S- 97	0.095	0	day	dry	RE	Distracted/Inattention	Motor Unit (Stopped)
96	23585679	12/13/23	I- 526	25.845	L- 2118	S- 97	0.131	0	day	dry	RE	Following too Closely	Motor Unit (In Transpo
97	21504139	01/19/21	I- 526	25.876	L- 2118	S- 97	0.162	0	day	dry	none	Ran off Road	Bridge Rail
98	24542785	07/02/24	I- 526	25.893	L- 2118	S- 97	0.18	0	day	dry	RE	Following too Closely	Motor Unit (In Transpo
99	22527686	04/26/22	I- 526	25.915	L- 2118	S- 97	0.202	0	day	dry	none	Over-steering	Median Barrier
100	22576146	10/20/22	I- 526	25.933	L- 2118	S- 97	0.22	0	day	dry	RE	Following too Closely	Motor Unit (Stopped)
101	21535826	06/09/21	I- 526	25.942	L- 2118	S- 97	0.229	0	night	dry	none	Fatigued/Asleep	Impact Attenuator/Cras
102	20565875	11/24/20	I- 526	25.942	L- 2118	S- 97	0.229	0	day	dry	SS	Ran off Road	Motor Unit (In Transpo
103	22536734	05/30/22	I- 526	25.945	L- 2118	S- 97	0.231	0	day	dry	none	Tires/Wheel	Equipment Failure
104	23552257	07/23/23	I- 526	25.949	L- 2118	S- 97	0.236	0	night	dry	RE	Driving too Fast for Con	Ran off Road Right
105	23528665	05/03/23	I- 526	25.954	L- 2118	S- 97	0.241	0	day	dry	RE	Following too Closely	Motor Unit (In Transpo
106	24555492	08/23/24	I- 526	25.956	L- 2118	S- 97	0.243	0	day	dry	SS	Improper Lane use/change	Tree
107	23520473	04/01/23	I- 526	25.962	L- 2118	S- 97	0.249	0	night	dry	RE	Distracted/Inattention	Motor Unit (In Transpo
108	20507789	02/08/20	I- 526	26.001	L- 2118	S- 97	0.288	0	night	dry	SS	Improper Lane use/change	Motor Unit (In Transpo
109	23577693	10/29/23	I- 526	26.002	L- 2118	S- 97	0.289	2	night	dry	none	Lying or Illegally in Ro	Pedestrian
110	22514246	03/09/22	I- 526	26.003	L- 2118	S- 97	0.29	0	night	wet	none	Weather Condition	Guardrail Face
111	23523314	04/04/23	I- 526	26.004	L- 2118	S- 97	0.292	0	day	dry	none	Swerving to Avoid Object	Median Barrier
112	23544360	06/02/23	I- 526	26.02	L- 2118	S- 97	0.308	0	night	dry	SS	Improper Lane use/change	Motor Unit (In Transpo
113	23581439	11/13/23	I- 526	26.028	L- 2118	S- 97	0.316	0	night	dry	RE	Following too Closely	Motor Unit (In Transpo
114	24545281	07/12/24	I- 526	26.031	L- 2118	S- 97	0.318	0	day	dry	Angle	Driving too Fast for Con	Median Barrier
115	24531157	05/20/24	I- 526	26.056	L- 2118	S- 97	0.344	0	day	dry	RE	Following too Closely	Motor Unit (Stopped)
116	20532394	06/20/20	I- 526	26.056	L- 2118	S- 97	0.344	1	day	wet	RE	Driving too Fast for Con	Motor Unit (Parked)
117	22516943	03/24/22	I- 526	26.069	L- 2118	S- 97	0.356	0	day	wet	RE	Following too Closely	Motor Unit (In Transpo
118	24516627	03/20/24	I- 526	26.082	L- 2118	S- 97	0.37	0	day	dry	RE	Distracted/Inattention	Motor Unit (In Transpo
119	22564693	10/04/22	I- 526	26.089	S- 97	S- 58	5	0	day	dry	RE	Following too Closely	Motor Unit (In Transpo
120	24555714	08/27/24	I- 526	26.095	L- 2118	S- 97	0.383	0	day	dry	RE	Following too Closely	Motor Unit (In Transpo

Query Crash List
CHARLESTON

AADT: 67514

Functional Class: Urban - Principal Arterial - Interstate
01/01/2020 through 12/31/2024

MP 23.81 to 29.12 (Length = 5.31 miles)

Total Crashes: 399 Fatal Crashes: 0 Serious Inj Crashes: 4 Other Inj Crashes: 100 PDO Crashes: 295 Light: 299 Dark: 100 Dry: 341 Wet: 57

OBS	Crash #	Date	Main	MP	Base	Second	BDO	Max Inj	Light	SFC	MAC	Probable Cause	Harmful Event
121	21544331	07/11/21	I- 526	26.103	L- 2118	S- 97	0.391	0	night	dry	RE	Driving too Fast for Con	Motor Unit (In Transpo
122	23507541	01/23/23	I- 526	26.104	L- 2118	S- 97	0.392	0	day	dry	RE	Following too Closely	Motor Unit (Stopped)
123	20511502	02/18/20	I- 526	26.123	L- 2118	S- 97	0.411	0	day	wet	RE	Following too Closely	Motor Unit (Stopped)
124	24577357	11/15/24	I- 526	26.129	L- 2118	S- 97	0.417	0	night	dry	RE	Following too Closely	Motor Unit (Stopped)
125	24523013	03/25/24	I- 526	26.136	L- 2118	S- 97	0.424	0	day	dry	RE	Following too Closely	Motor Unit (In Transpo
126	23571339	10/27/23	I- 526	26.138	L- 2118	S- 97	0.426	0	day	dry	SS	Improper Lane use/change	Other (Post, Pole, Sup
127	24527005	04/29/24	I- 526	26.147	L- 2118	S- 97	0.435	0	day	dry	RE	Driving too Fast for Con	Motor Unit (Stopped)
128	21527326	05/10/21	I- 526	26.168	L- 2118	S- 97	0.456	0	day	dry	none	Tires/Wheel	Other Movable Object
129	20557645	10/17/20	I- 526	26.189	L- 2118	S- 97	0.478	0	night	dry	SS	Unknown	Motor Unit (In Transpo
130	23563567	09/25/23	I- 526	26.205	L- 2118	S- 97	0.494	1	day	dry	RE	Following too Closely	Motor Unit (In Transpo
131	23568126	10/13/23	I- 526	26.218	L- 2118	S- 97	0.507	0	day	wet	RE	Following too Closely	Motor Unit (In Transpo
132	23557352	08/29/23	I- 526	26.227	L- 2118	S- 97	0.516	0	day	dry	RE	Driving too Fast for Con	Motor Unit (Stopped)
133	20507729	02/08/20	I- 526	26.229	L- 2118	S- 97	0.518	2	day	dry	RE	Following too Closely	Motor Unit (Stopped)
134	21556025	08/07/21	I- 526	26.245	L- 2118	S- 97	0.534	0	day	dry	SS	Failure to Yield RoW	Motor Unit (In Transpo
135	23554904	08/16/23	I- 526	26.299	L- 2118	S- 97	0.589	0	night	dry	none	Ran off Road	Median Barrier
136	20560090	10/29/20	I- 526	26.305	L- 2118	S- 97	0.594	0	day	dry	RE	Following too Closely	Motor Unit (Stopped)
137	24584855	12/03/24	I- 526	26.307	L- 2118	S- 97	0.597	2	day	dry	RE	Following too Closely	Ditch
138	22587333	11/02/22	I- 526	26.309	L- 2118	S- 97	0.598	0	day	dry	none	Driving too Fast for Con	Ran off Road Right
139	20532551	06/27/20	I- 526	26.316	L- 2118	S- 97	0.606	0	night	dry	none	Over-steering	Guardrail Face
140	23585686	12/19/23	I- 526	26.329	L- 2118	S- 97	0.619	0	day	dry	RE	Following too Closely	Motor Unit (In Transpo
141	23553889	08/14/23	I- 526	26.362	L- 2118	S- 97	0.652	0	day	dry	RE	Driving too Fast for Con	Motor Unit (In Transpo
142	21575478	11/14/21	I- 526	26.362	L- 2118	S- 97	0.652	0	night	dry	none	Under the Influence	Other (fixed)
143	23505810	01/12/23	I- 526	26.37	L- 2118	S- 97	0.66	1	day	dry	RE	Following too Closely	Motor Unit (Stopped)
144	22585934	12/13/22	I- 526	26.378	L- 2118	S- 97	0.668	0	day	dry	BI	Distracted/Inattention	Motor Unit (Stopped)
145	21542470	06/30/21	I- 526	26.39	L- 2118	S- 97	0.68	0	night	dry	RE	Following too Closely	Motor Unit (Stopped)
146	21537426	06/24/21	I- 526	26.489	L- 2118	S- 97	0.78	2	day	dry	none	Driving too Fast for Con	Median Barrier
147	20558846	10/27/20	I- 526	26.551	L- 2118	S- 97	0.842	0	day	dry	RE	Following too Closely	Motor Unit (In Transpo
148	22503084	01/17/22	I- 526	26.556	L- 2118	S- 97	0.847	0	day	dry	none	Cargo	Other Movable Object
149	20566035	11/18/20	I- 526	26.572	L- 2118	S- 97	0.863	1	day	dry	RE	Following too Closely	Motor Unit (Stopped)
150	23515610	02/22/23	I- 526	26.601	S- 97	L- 2118	0.88	0	day	dry	RE	Following too Closely	Motor Unit (In Transpo
151	20517459	03/17/20	I- 526	26.607	S- 97	L- 2118	0.874	0	day	dry	Angle	Following too Closely	Motor Unit (In Transpo
152	22544691	07/08/22	I- 526	26.641	S- 97	L- 2118	0.84	0	day	dry	RE	Driving too Fast for Con	Motor Unit (In Transpo
153	24535102	05/22/24	I- 526	26.652	S- 97	L- 2118	0.829	1	day	dry	Angle	Driving too Fast for Con	Motor Unit (Stopped)
154	24520511	03/27/24	I- 526	26.666	S- 97	L- 2118	0.815	0	day	dry	RE	Following too Closely	Motor Unit (Stopped)
155	22568206	10/19/22	I- 526	26.684	S- 97	L- 2118	0.797	0	night	wet	RE	Following too Closely	Motor Unit (In Transpo
156	20519884	03/23/20	I- 526	26.698	S- 97	L- 2118	0.783	3	day	dry	none	Distracted/Inattention	Guardrail Face
157	22505826	01/20/22	I- 526	26.708	S- 97	L- 2118	0.773	2	day	dry	Angle	Following too Closely	Median Barrier
158	20558434	10/14/20	I- 526	26.709	S- 97	L- 2118	0.772	0	night	dry	none	Animal in Road	Animal (Deer Only)
159	20545294	08/26/20	I- 526	26.72	S- 97	L- 2118	0.761	2	day	dry	SS	Failure to Yield RoW	Motor Unit (In Transpo
160	22584745	11/08/22	I- 526	26.727	S- 97	L- 2118	0.754	0	day	dry	RE	Following too Closely	Motor Unit (In Transpo

Query Crash List
CHARLESTON

AADT: 67514

Functional Class: Urban - Principal Arterial - Interstate
01/01/2020 through 12/31/2024

MP 23.81 to 29.12 (Length = 5.31 miles)

Total Crashes: 399 Fatal Crashes: 0 Serious Inj Crashes: 4 Other Inj Crashes: 100 PDO Crashes: 295 Light: 299 Dark: 100 Dry: 341 Wet: 57

OBS	Crash #	Date	Main	MP	Base	Second	BDO	Max Inj	Light	SFC	MAC	Probable Cause	Harmful Event
161	20533036	06/21/20	I- 526	26.739	S- 97	L- 2118	0.742	3	day	dry	none	Unknown	Tree
162	21585378	12/13/21	I- 526	26.761	S- 97	L- 2118	0.72	0	day	dry	RE	Following too Closely	Motor Unit (In Transpo
163	22541801	06/06/22	I- 526	26.769	S- 97	L- 2118	0.712	0	day	dry	none	Truck Coupling	Ran off Road Left
164	21518438	03/19/21	I- 526	26.784	S- 97	L- 2118	0.696	0	day	dry	RE	Improper Lane use/change	Motor Unit (In Transpo
165	23554947	08/23/23	I- 526	26.789	S- 97	L- 2118	0.691	1	day	dry	RE	Following too Closely	Motor Unit (In Transpo
166	23515895	02/23/23	I- 526	26.805	S- 97	L- 2118	0.675	0	day	dry	SS	Following too Closely	Motor Unit (Stopped)
167	23580273	11/29/23	I- 526	26.831	S- 97	L- 2118	0.649	0	night	dry	RE	Following too Closely	Motor Unit (In Transpo
168	23585672	12/12/23	I- 526	26.85	S- 97	L- 2118	0.63	0	day	dry	RE	Following too Closely	Motor Unit (Stopped)
169	22525664	04/24/22	I- 526	26.853	S- 97	L- 2118	0.627	0	night	dry	none	Under the Influence	Ditch
170	21509413	01/09/21	I- 526	26.854	S- 97	L- 2118	0.626	2	night	dry	none	Ran off Road	Tree
171	21542471	06/30/21	I- 526	26.863	S- 97	L- 2118	0.617	0	night	dry	RE	Following too Closely	Motor Unit (Stopped)
172	24506328	01/30/24	I- 526	26.866	S- 97	L- 2118	0.614	0	night	dry	SS	Improper Lane use/change	Motor Unit (In Transpo
173	23584058	12/15/23	I- 526	26.894	S- 97	L- 2118	0.586	0	day	dry	RE	Following too Closely	Motor Unit (Stopped)
174	23555072	08/15/23	I- 526	26.895	S- 97	L- 2118	0.584	1	day	dry	RE	Driving too Fast for Con	Motor Unit (Stopped)
175	22506650	02/06/22	I- 526	26.896	S- 97	L- 2118	0.584	0	day	dry	none	Under the Influence	Median Barrier
176	20504353	01/23/20	I- 526	26.91	S- 97	L- 2118	0.569	0	day	dry	RE	Following too Closely	Motor Unit (In Transpo
177	24531573	05/22/24	I- 526	26.919	S- 97	L- 2118	0.56	0	day	dry	RE	Other Improper Action	Motor Unit (Stopped)
178	21511246	02/24/21	I- 526	26.947	S- 97	L- 2118	0.532	0	day	dry	SS	Following too Closely	Motor Unit (Stopped)
179	24550320	08/08/24	I- 526	26.953	S- 97	L- 2118	0.526	0	night	wet	none	Driving too Fast for Con	Median Barrier
180	22527688	04/28/22	I- 526	26.964	S- 97	L- 2118	0.515	0	day	dry	Angle	Aggressive Operation	Motor Unit (In Transpo
181	22525350	04/15/22	I- 526	26.966	S- 97	L- 2118	0.513	0	day	dry	SS	Failure to Yield RoW	Motor Unit (In Transpo
182	23562081	09/12/23	I- 526	26.967	S- 97	L- 2118	0.512	0	day	dry	RE	Following too Closely	Motor Unit (Stopped)
183	21572272	10/07/21	I- 526	26.969	S- 97	L- 2118	0.51	0	day	dry	RE	Following too Closely	Motor Unit (Stopped)
184	22573916	10/04/22	I- 526	26.97	S- 97	L- 2118	0.509	0	day	dry	RE	Following too Closely	Motor Unit (In Transpo
185	22557132	08/30/22	I- 526	26.975	S- 97	L- 2118	0.504	0	day	dry	SS	Failure to Yield RoW	Motor Unit (In Transpo
186	23522794	04/04/23	I- 526	26.976	S- 97	L- 2118	0.503	0	day	dry	SS	Swerving to Avoid Object	Motor Unit (In Transpo
187	23538292	06/19/23	I- 526	26.983	S- 97	L- 2118	0.496	1	night	wet	SS	Driving too Fast for Con	Ditch
188	20537460	07/14/20	I- 526	26.984	S- 97	L- 2118	0.495	0	day	dry	SS	Improper Lane use/change	Motor Unit (In Transpo
189	24572856	10/24/24	I- 526	26.989	S- 97	L- 2118	0.49	0	day	dry	RE	Following too Closely	Motor Unit (Stopped)
190	23534733	05/26/23	I- 526	26.991	S- 97	L- 2118	0.488	1	day	wet	RE	Distracted/Inattention	Motor Unit (In Transpo
191	21567198	10/05/21	I- 526	26.992	S- 97	L- 2118	0.487	0	day	wet	RE	Following too Closely	Motor Unit (Stopped)
192	21532406	05/06/21	I- 526	26.997	S- 97	L- 2118	0.482	2	day	dry	SS	Improper Lane use/change	Motor Unit (In Transpo
193	23507505	01/03/23	I- 526	27.003	S- 97	L- 2118	0.476	0	day	dry	none	Unknown	Other Movable Object
194	24533400	05/28/24	I- 526	27.011	S- 97	L- 2118	0.468	0	day	dry	SS	Improper Lane use/change	Motor Unit (In Transpo
195	23504517	01/03/23	I- 526	27.025	S- 97	L- 2118	0.454	0	day	dry	RE	Aggressive Operation	Motor Unit (Stopped)
196	20505168	01/27/20	I- 526	27.029	S- 97	L- 2118	0.45	0	day	dry	RE	Following too Closely	Motor Unit (In Transpo
197	21559235	09/07/21	I- 526	27.044	S- 97	L- 2118	0.434	1	day	dry	RE	Following too Closely	Motor Unit (Stopped)
198	24514091	03/13/24	I- 526	27.045	S- 97	L- 2118	0.433	0	day	dry	RE	Failure to Yield RoW	Motor Unit (In Transpo
199	23504569	01/11/23	I- 526	27.061	S- 97	L- 2118	0.417	1	day	dry	RE	Following too Closely	Motor Unit (In Transpo
200	20546239	08/25/20	I- 526	27.065	S- 97	L- 2118	0.413	0	day	wet	SS	Improper Lane use/change	Motor Unit (In Transpo

Crash Listing (continued)

Query Crash List
CHARLESTON

AADT: 67514

Functional Class: Urban - Principal Arterial - Interstate
01/01/2020 through 12/31/2024

MP 23.81 to 29.12 (Length = 5.31 miles)

Total Crashes: 399 Fatal Crashes: 0 Serious Inj Crashes: 4 Other Inj Crashes: 100 PDO Crashes: 295 Light: 299 Dark: 100 Dry: 341 Wet: 57

OBS	Crash #	Date	Main	MP	Base	Second	BDO	Max Inj	Light	SFC	MAC	Probable Cause	Harmful Event
201	24580311	11/16/24	I- 526	27.065	S- 97	L- 2118	0.413	0	night	dry	none	Unknown	Animal (Deer Only)
202	24558443	08/15/24	I- 526	27.07	S- 97	L- 2118	0.408	0	day	dry	none	Medical Related	Other (Wall, Building,
203	21537995	06/25/21	I- 526	27.075	S- 97	L- 2118	0.403	0	day	dry	SS	Improper Lane use/change	Motor Unit (In Transpo
204	20503624	01/19/20	I- 526	27.082	S- 97	L- 2118	0.396	1	day	dry	RE	Following too Closely	Motor Unit (Stopped)
205	20572193	12/21/20	I- 526	27.082	S- 97	L- 2118	0.396	0	night	wet	SS	Improper Lane use/change	Motor Unit (In Transpo
206	20522818	04/25/20	I- 526	27.116	S- 97	L- 2118	0.362	1	day	dry	none	Tires/Wheel	Bridge Rail
207	21565393	09/29/21	I- 526	27.122	S- 97	L- 2118	0.356	0	day	dry	SS	Distracted/Inattention	Ran off Road Right
208	20538252	07/21/20	I- 526	27.128	S- 97	L- 2118	0.35	1	day	dry	RE	Improper Lane use/change	Motor Unit (In Transpo
209	23582218	12/04/23	I- 526	27.133	S- 97	L- 2118	0.345	0	day	dry	none	Debris	Other Movable Object
210	23562744	09/20/23	I- 526	27.136	S- 97	L- 2118	0.342	0	night	dry	SS	Following too Closely	Motor Unit (In Transpo
211	21551277	08/13/21	I- 526	27.158	S- 97	L- 2118	0.319	0	night	dry	RE	Following too Closely	Motor Unit (Stopped)
212	21534551	06/11/21	I- 526	27.16	S- 97	L- 2118	0.317	0	day	wet	Angle	Driving too Fast for Con	Guardrail Face
213	20533951	06/29/20	I- 526	27.16	S- 97	L- 2118	0.317	2	day	dry	RE	Following too Closely	Motor Unit (Stopped)
214	20511659	02/21/20	I- 526	27.169	S- 97	L- 2118	0.308	0	day	dry	SS	Aggressive Operation	Motor Unit (In Transpo
215	20513744	02/26/20	I- 526	27.169	S- 97	L- 2118	0.308	0	day	dry	SS	Improper Lane use/change	Motor Unit (In Transpo
216	21501109	01/08/21	I- 526	27.176	S- 97	L- 2118	0.301	1	night	wet	SS	Improper Lane use/change	Motor Unit (In Transpo
217	20222484	02/23/20	I- 526	27.18	S- 97	S- 58	120	0	day	dry	SS	Aggressive Operation	Motor Unit (In Transpo
218	22587319	12/12/22	I- 526	27.218	S- 97	L- 2118	0.26	0	night	dry	RE	Following too Closely	Motor Unit (Stopped)
219	21503822	01/27/21	I- 526	27.315	S- 97	L- 2118	0.162	1	day	wet	RE	Following too Closely	Motor Unit (Stopped)
220	21512453	03/09/21	I- 526	27.33	S- 97	L- 2118	0.147	0	day	dry	RE	Following too Closely	Motor Unit (Stopped)
221	23549280	07/28/23	I- 526	27.332	S- 97	L- 2118	0.145	1	day	wet	RE	Following too Closely	Motor Unit (In Transpo
222	24540396	06/27/24	I- 526	27.345	S- 97	L- 2118	0.132	0	day	dry	RE	Following too Closely	Motor Unit (Stopped)
223	23504919	01/23/23	I- 526	27.369	S- 97	S- 58	98	0	day	dry	SS	Improper Lane use/change	Motor Unit (In Transpo
224	22588487	12/12/22	I- 526	27.379	S- 97	L- 2118	0.098	0	night	dry	RE	Following too Closely	Motor Unit (Stopped)
225	20524905	05/18/20	I- 526	27.39	S- 97	L- 2118	0.087	0	day	dry	RE	Following too Closely	Motor Unit (In Transpo
226	23524548	03/10/23	I- 526	27.411	S- 97	L- 2118	0.066	0	day	wet	RE	Following too Closely	Motor Unit (Stopped)
227	21589669	12/16/21	I- 526	27.422	S- 97	L- 2118	0.055	0	night	dry	RE	Following too Closely	Motor Unit (Stopped)
228	21502338	01/18/21	I- 526	27.445	S- 97	L- 2118	0.032	0	night	dry	none	Over-steering	Median Barrier
229	24561887	09/11/24	I- 526	27.447	S- 97	L- 2118	0.03	1	day	dry	SS	Improper Lane use/change	Motor Unit (In Transpo
230	22538226	05/14/22	I- 526	27.449	S- 97	L- 2118	0.028	0	night	dry	RE	Under the Influence	Median Barrier
231	23560725	09/05/23	I- 526	27.456	S- 97	L- 2118	0.021	2	day	dry	none	Ran off Road	Guardrail Face
232	23526494	04/25/23	I- 526	27.463	S- 97	L- 2118	0.014	0	day	dry	RE	Following too Closely	Motor Unit (Stopped)
233	23554958	08/23/23	I- 526	27.464	S- 97	L- 2118	0.013	0	day	dry	none	Debris	Other Movable Object
234	20519812	04/08/20	I- 526	27.485	S- 97	L- 4436	0.008	2	day	dry	RE	Under the Influence	Motor Unit (Stopped)
235	21538000	06/24/21	I- 526	27.497	S- 97	L- 4436	0.02	0	day	dry	RE	Following too Closely	Motor Unit (Stopped)
236	23562064	09/07/23	I- 526	27.504	S- 97	L- 4436	0.027	0	day	dry	SS	Improper Lane use/change	Motor Unit (In Transpo
237	23554976	07/29/23	I- 526	27.51	S- 97	L- 4436	0.033	0	night	wet	none	Ran off Road	Guardrail End
238	24540371	06/17/24	I- 526	27.513	S- 97	L- 4436	0.036	0	day	dry	RE	Following too Closely	Motor Unit (Stopped)
239	24503993	01/22/24	I- 526	27.517	S- 97	L- 4436	0.04	2	day	dry	RE	Under the Influence	Motor Unit (In Transpo
240	20509669	02/08/20	I- 526	27.517	S- 97	L- 4436	0.04	0	day	dry	RE	Following too Closely	Motor Unit (In Transpo

Query Crash List
CHARLESTON

AADT: 67514

Functional Class: Urban - Principal Arterial - Interstate
01/01/2020 through 12/31/2024

MP 23.81 to 29.12 (Length = 5.31 miles)

Total Crashes: 399 Fatal Crashes: 0 Serious Inj Crashes: 4 Other Inj Crashes: 100 PDO Crashes: 295 Light: 299 Dark: 100 Dry: 341 Wet: 57

OBS	Crash #	Date	Main	MP	Base	Second	BDO	Max Inj	Light	SFC	MAC	Probable Cause	Harmful Event
241	24519632	03/25/24	I- 526	27.517	S- 97	L- 4436	0.04	0	day	dry	RE	Following too Closely	Motor Unit (Stopped)
242	22520289	04/01/22	I- 526	27.517	S- 97	L- 4436	0.04	1	night	dry	RE	Aggressive Operation	Motor Unit (In Transpo
243	23564286	09/19/23	I- 526	27.517	S- 97	L- 4436	0.04	0	day	dry	RE	Following too Closely	Motor Unit (Stopped)
244	20561075	10/30/20	I- 526	27.517	S- 97	L- 4436	0.04	0	day	dry	RE	Driving too Fast for Con	Motor Unit (Stopped)
245	21575365	11/08/21	I- 526	27.517	S- 97	L- 4436	0.04	0	day	dry	RE	Following too Closely	Guardrail Face
246	20565218	11/15/20	I- 526	27.517	S- 97	L- 4436	0.04	0	day	dry	SS	Improper Lane use/change	Motor Unit (In Transpo
247	20564977	11/24/20	I- 526	27.517	S- 97	L- 4436	0.04	1	day	dry	SS	Improper Lane use/change	Motor Unit (In Transpo
248	21582762	12/01/21	I- 526	27.517	S- 97	L- 4436	0.04	2	day	dry	RE	Following too Closely	Motor Unit (In Transpo
249	23582072	12/06/23	I- 526	27.517	S- 97	L- 4436	0.04	1	day	dry	RE	Driving too Fast for Con	Motor Unit (In Transpo
250	24585644	12/09/24	I- 526	27.517	S- 97	L- 4436	0.04	1	night	wet	none	Driving too Fast for Con	Guardrail End
251	20567540	12/02/20	I- 526	27.568	S- 97	L- 4436	0.091	1	day	dry	RE	Following too Closely	Motor Unit (Stopped)
252	23569510	10/20/23	I- 526	27.569	S- 97	L- 4436	0.092	0	day	wet	RE	Following too Closely	Motor Unit (Stopped)
253	23550278	08/03/23	I- 526	27.584	S- 97	L- 4436	0.107	0	day	dry	RE	Following too Closely	Motor Unit (Stopped)
254	21578806	11/11/21	I- 526	27.587	S- 97	L- 4436	0.11	0	day	dry	none	Swerving to Avoid Object	Median Barrier
255	24545556	07/16/24	I- 526	27.591	S- 97	L- 4436	0.114	0	night	dry	none	Excessive Speed	Median Barrier
256	24577554	11/13/24	I- 526	27.591	S- 97	L- 4436	0.114	2	day	dry	RE	Driving too Fast for Con	Motor Unit (Stopped)
257	22575311	10/28/22	I- 526	27.595	S- 97	L- 4436	0.118	0	day	dry	SS	Failure to Yield RoW	Motor Unit (In Transpo
258	20511102	02/15/20	I- 526	27.599	S- 97	L- 4436	0.122	0	night	dry	Angle	Aggressive Operation	Motor Unit (In Transpo
259	22501902	01/17/22	I- 526	27.608	S- 97	L- 4436	0.131	0	day	dry	RE	Following too Closely	Motor Unit (Stopped)
260	22544773	07/14/22	I- 526	27.608	S- 97	L- 4436	0.131	0	day	dry	RE	Distracted/Inattention	Motor Unit (Stopped)
261	23531566	05/11/23	I- 526	27.618	S- 97	L- 4436	0.141	0	day	dry	RE	Following too Closely	Motor Unit (In Transpo
262	20569857	12/16/20	I- 526	27.618	S- 97	L- 4436	0.141	0	day	wet	RE	Following too Closely	Motor Unit (Stopped)
263	24531206	05/22/24	I- 526	27.63	S- 97	L- 4436	0.153	0	day	dry	RE	Following too Closely	Motor Unit (Stopped)
264	24516029	03/13/24	I- 526	27.638	S- 97	L- 4436	0.161	0	day	dry	RE	Driving too Fast for Con	Motor Unit (Stopped)
265	20554558	09/17/20	I- 526	27.664	S- 97	L- 4436	0.187	2	day	wet	RE	Following too Closely	Motor Unit (In Transpo
266	24578333	11/13/24	I- 526	27.743	S- 97	L- 4436	0.266	0	day	dry	SS	Driving too Fast for Con	Motor Unit (Stopped)
267	21530733	05/18/21	I- 526	27.756	S- 97	L- 4436	0.279	1	day	dry	none	Under the Influence	Embankment
268	23550341	07/28/23	I- 526	27.759	S- 97	L- 4436	0.282	0	day	wet	none	Other Improper Action	Other Movable Object
269	20570593	12/16/20	I- 526	27.773	S- 97	L- 4436	0.296	0	day	wet	none	Driving too Fast for Con	Guardrail Face
270	23531315	05/16/23	I- 526	27.8	S- 97	L- 4436	0.323	0	day	dry	RE	Following too Closely	Motor Unit (In Transpo
271	23536359	05/26/23	I- 526	27.847	S- 97	L- 4436	0.37	0	day	wet	RE	Distracted/Inattention	Motor Unit (Stopped)
272	24549653	08/05/24	I- 526	27.847	S- 97	L- 4436	0.37	0	day	wet	none	Driving too Fast for Con	Guardrail Face
273	20546991	08/27/20	I- 526	27.847	S- 97	L- 4436	0.37	0	day	dry	SS	Improper Lane use/change	Motor Unit (In Transpo
274	20549229	09/17/20	I- 526	27.847	S- 97	L- 4436	0.37	0	night	wet	none	Driving too Fast for Con	Guardrail Face
275	23564174	09/30/23	I- 526	27.847	S- 97	L- 4436	0.37	0	night	dry	none	Animal in Road	Animal (Deer Only)
276	21582763	12/02/21	I- 526	27.847	S- 97	L- 4436	0.37	2	night	dry	Angle	Driving too Fast for Con	Median Barrier
277	22585851	12/07/22	I- 526	27.847	S- 97	L- 4436	0.37	2	night	dry	RE	Following too Closely	Motor Unit (Stopped)
278	24587280	12/29/24	I- 526	27.849	S- 97	L- 4436	0.372	0	day	wet	RE	Following too Closely	Motor Unit (Stopped)
279	23582312	12/06/23	I- 526	27.875	S- 97	L- 4436	0.398	0	day	dry	RE	Following too Closely	Motor Unit (Stopped)
280	20530891	06/11/20	I- 526	27.88	S- 97	L- 4436	0.403	0	day	dry	RE	Aggressive Operation	Motor Unit (Stopped)

Query Crash List
CHARLESTON

AADT: 67514

Functional Class: Urban - Principal Arterial - Interstate
01/01/2020 through 12/31/2024

MP 23.81 to 29.12 (Length = 5.31 miles)

Total Crashes: 399 Fatal Crashes: 0 Serious Inj Crashes: 4 Other Inj Crashes: 100 PDO Crashes: 295 Light: 299 Dark: 100 Dry: 341 Wet: 57

OBS	Crash #	Date	Main	MP	Base	Second	BDO	Max Inj	Light	SFC	MAC	Probable Cause	Harmful Event
281	21561223	09/09/21	I- 526	27.887	S- 97	L- 4436	0.41	0	day	wet	none	Driving too Fast for Con	Overturn/Rollover
282	23522820	03/24/23	I- 526	27.89	S- 97	L- 4436	0.413	0	day	dry	RE	Following too Closely	Motor Unit (In Transpo
283	20521795	04/17/20	I- 526	27.89	S- 97	L- 4436	0.413	2	day	dry	SS	Improper Lane use/change	Guardrail Face
284	22523544	04/14/22	I- 526	27.905	S- 97	L- 4436	0.428	1	day	dry	RE	Following too Closely	Motor Unit (Stopped)
285	23576443	11/01/23	I- 526	27.909	S- 97	L- 4436	0.432	2	day	dry	RE	Driving too Fast for Con	Motor Unit (Stopped)
286	24500796	01/08/24	I- 526	27.927	L- 4436	S- 97	0.434	1	day	dry	RE	Following too Closely	Motor Unit (In Transpo
287	20517623	03/18/20	I- 526	27.935	L- 4436	S- 97	0.427	0	night	dry	Angle	Following too Closely	Motor Unit (In Transpo
288	23541689	06/29/23	I- 526	27.935	L- 4436	S- 97	0.427	0	day	dry	SS	Failure to Yield RoW	Motor Unit (In Transpo
289	23524399	02/01/23	I- 526	27.953	L- 4436	S- 97	0.41	0	night	dry	RE	Following too Closely	Motor Unit (Stopped)
290	21572990	11/03/21	I- 526	27.953	L- 4436	S- 97	0.41	0	day	dry	none	Distracted/Inattention	Bridge Rail
291	24542818	07/03/24	I- 526	27.966	L- 4436	S- 97	0.398	0	day	dry	SS	Improper Lane use/change	Motor Unit (In Transpo
292	23564244	09/30/23	I- 526	27.966	L- 4436	S- 97	0.398	0	night	dry	none	Animal in Road	Animal (Deer Only)
293	23565869	09/28/23	I- 526	27.969	L- 4436	S- 97	0.395	0	night	dry	none	Under the Influence	Guardrail Face
294	24509890	02/12/24	I- 526	27.974	L- 4436	S- 97	0.391	2	day	wet	Angle	Driving too Fast for Con	Median Barrier
295	24529613	05/12/24	I- 526	27.974	L- 4436	S- 97	0.391	0	day	dry	SS	Failure to Yield RoW	Motor Unit (In Transpo
296	24573735	10/09/24	I- 526	27.974	L- 4436	S- 97	0.391	0	day	dry	RE	Improper Lane use/change	Ditch
297	21589904	12/16/21	I- 526	27.976	L- 4436	S- 97	0.389	0	night	dry	RE	Driving too Fast for Con	Motor Unit (In Transpo
298	21551989	08/07/21	I- 526	27.986	L- 4436	S- 97	0.38	0	day	dry	RE	Following too Closely	Motor Unit (Stopped)
299	24536769	06/06/24	I- 526	27.987	L- 4436	S- 97	0.379	0	day	dry	none	Failure to Yield RoW	Median Barrier
300	21551990	08/07/21	I- 526	27.998	L- 4436	S- 97	0.369	0	day	dry	none	Fatigued/Asleep	Guardrail End
301	23548921	07/28/23	I- 526	27.999	L- 4436	S- 97	0.368	0	day	wet	none	Driving too Fast for Con	Guardrail Face
302	22527707	05/05/22	I- 526	28.027	L- 4436	S- 97	0.341	0	day	dry	RE	Following too Closely	Motor Unit (In Transpo
303	21547422	08/01/21	I- 526	28.029	L- 4436	S- 97	0.34	0	night	dry	SS	Improper Lane use/change	Motor Unit (In Transpo
304	23538502	05/27/23	I- 526	28.031	L- 4436	S- 97	0.338	0	day	wet	none	Swerving to Avoid Object	Guardrail Face
305	21501785	01/03/21	I- 526	28.043	L- 4436	S- 97	0.326	0	night	wet	none	Under the Influence	Bridge Rail
306	23511801	02/21/23	I- 526	28.054	L- 4436	S- 97	0.316	0	day	dry	SS	Failure to Yield RoW	Motor Unit (In Transpo
307	22548376	06/20/22	I- 526	28.072	L- 4436	S- 97	0.298	0	day	dry	SS	Improper Lane use/change	Ditch
308	22542427	06/10/22	I- 526	28.075	L- 4436	S- 97	0.296	1	day	dry	none	Distracted/Inattention	Other (Wall, Building,
309	20560098	10/30/20	I- 526	28.083	L- 4436	S- 97	0.288	1	day	dry	none	Other Improper Action	Equipment Failure
310	23575458	11/13/23	I- 526	28.108	L- 4436	S- 97	0.263	0	night	dry	none	Tires/Wheel	Median Barrier
311	23544400	07/10/23	I- 526	28.109	L- 4436	S- 97	0.262	0	day	dry	RE	Excessive Speed	Motor Unit (In Transpo
312	23567550	08/25/23	I- 526	28.109	L- 4436	S- 97	0.262	0	night	dry	RE	Following too Closely	Motor Unit (Stopped)
313	23512326	02/22/23	I- 526	28.11	L- 4436	S- 97	0.262	1	night	dry	none	Aggressive Operation	Guardrail Face
314	23531557	05/08/23	I- 526	28.114	L- 4436	S- 97	0.258	0	night	dry	none	Steering	Guardrail End
315	22526578	05/03/22	I- 526	28.136	L- 4436	S- 97	0.236	0	day	dry	RE	Following too Closely	Motor Unit (In Transpo
316	23553894	08/17/23	I- 526	28.138	L- 4436	S- 97	0.234	0	day	dry	RE	Following too Closely	Motor Unit (Stopped)
317	24523368	04/07/24	I- 526	28.145	L- 4436	S- 97	0.227	1	night	dry	none	Driving too Fast for Con	Bridge Rail
318	24535115	06/02/24	I- 526	28.148	L- 4436	S- 97	0.224	2	day	dry	none	Driving too Fast for Con	Median Barrier
319	23567613	10/13/23	I- 526	28.16	L- 4436	S- 97	0.212	0	day	wet	RE	Following too Closely	Motor Unit (In Transpo
320	22544513	07/10/22	I- 526	28.161	L- 4436	S- 97	0.211	2	night	wet	HO	Driving too Fast for Con	Median Barrier

Query Crash List
CHARLESTON

AADT: 67514

Functional Class: Urban - Principal Arterial - Interstate
01/01/2020 through 12/31/2024

MP 23.81 to 29.12 (Length = 5.31 miles)

Total Crashes: 399 Fatal Crashes: 0 Serious Inj Crashes: 4 Other Inj Crashes: 100 PDO Crashes: 295 Light: 299 Dark: 100 Dry: 341 Wet: 57

OBS	Crash #	Date	Main	MP	Base	Second	BDO	Max Inj	Light	SFC	MAC	Probable Cause	Harmful Event
321	24578792	11/19/24	I- 526	28.169	L- 4436	S- 97	0.203	0	day	dry	RE	Following too Closely	Motor Unit (In Transpo
322	22534807	05/09/22	I- 526	28.203	L- 4436	S- 97	0.169	0	day	dry	RE	Distracted/Inattention	Motor Unit (In Transpo
323	24535107	05/27/24	I- 526	28.222	L- 4436	S- 97	0.15	2	day	dry	none	Over-steering	Ran off Road Left
324	20568917	12/02/20	I- 526	28.235	L- 4436	S- 97	0.137	0	day	dry	none	Fatigued/Asleep	Median Barrier
325	23586996	12/23/23	I- 526	28.236	L- 4436	S- 97	0.136	0	night	dry	RE	Texting	Motor Unit (In Transpo
326	21513622	03/11/21	I- 526	28.246	L- 4436	S- 97	0.126	1	day	dry	none	Swerving to Avoid Object	Guardrail Face
327	21555731	08/21/21	I- 526	28.255	L- 4436	S- 97	0.117	0	day	wet	Angle	Weather Condition	Motor Unit (In Transpo
328	24568431	10/09/24	I- 526	28.262	L- 4436	S- 97	0.11	0	day	dry	none	Debris	Other Movable Object
329	22534145	05/19/22	I- 526	28.269	L- 4436	S- 97	0.103	0	day	dry	RE	Following too Closely	Motor Unit (Stopped)
330	23585885	12/21/23	I- 526	28.272	L- 4436	S- 97	0.1	0	day	dry	SS	Improper Lane use/change	Ran off Road Left
331	23507511	01/13/23	I- 526	28.277	L- 4436	S- 97	0.095	0	day	dry	none	Debris	Other Movable Object
332	20512059	02/26/20	I- 526	28.282	L- 4436	S- 97	0.09	0	day	wet	RE	Following too Closely	Motor Unit (In Transpo
333	23553867	08/05/23	I- 526	28.293	L- 4436	S- 97	0.079	0	day	dry	RE	Following too Closely	Motor Unit (Stopped)
334	21563336	07/26/21	I- 526	28.303	L- 4436	S- 97	0.069	0	day	wet	RE	Driving too Fast for Con	Motor Unit (In Transpo
335	24507087	02/11/24	I- 526	28.325	L- 4436	S- 97	0.047	0	night	dry	none	Unknown	Guardrail Face
336	24542519	06/18/24	I- 526	28.337	L- 4436	S- 97	0.035	0	day	dry	RE	Following too Closely	Motor Unit (Stopped)
337	24523012	03/22/24	I- 526	28.341	L- 4436	S- 97	0.031	0	day	wet	RE	Driving too Fast for Con	Motor Unit (In Transpo
338	21506964	02/06/21	I- 526	28.355	L- 4436	S- 97	0.017	1	night	wet	RE	Following too Closely	Motor Unit (Stopped)
339	24543534	07/01/24	I- 526	28.376	L- 4436	R- 7556 14	0.004	0	day	dry	RE	Following too Closely	Motor Unit (In Transpo
340	23554052	08/20/23	I- 526	28.387	L- 4436	R- 7556 14	0.015	0	night	dry	RE	Following too Closely	Motor Unit (Stopped)
341	24564940	10/03/24	I- 526	28.402	L- 4436	R- 7556 14	0.03	0	day	dry	RE	Following too Closely	Motor Unit (In Transpo
342	22504260	01/23/22	I- 526	28.45	L- 4436	R- 7556 14	0.078	0	night	dry	none	Animal in Road	Animal (all other)
343	24526939	04/30/24	I- 526	28.46	L- 4436	R- 7556 14	0.088	0	day	dry	RE	Following too Closely	Motor Unit (In Transpo
344	22553033	07/15/22	I- 526	28.469	L- 4436	R- 7556 14	0.097	1	day	dry	RE	Following too Closely	Motor Unit (Stopped)
345	22501371	01/07/22	I- 526	28.471	L- 4436	R- 7556 14	0.099	0	day	dry	RE	Driving too Fast for Con	Motor Unit (Stopped)
346	22545106	07/15/22	I- 526	28.473	L- 4436	R- 7556 14	0.101	0	day	wet	RE	Following too Closely	Motor Unit (Stopped)
347	23559420	07/27/23	I- 526	28.476	L- 4436	R- 7556 14	0.104	0	day	dry	RE	Driving too Fast for Con	Motor Unit (In Transpo
348	22561364	08/26/22	I- 526	28.478	L- 4436	R- 7556 14	0.106	0	day	dry	SS	Improper Lane use/change	Motor Unit (In Transpo
349	24511282	02/22/24	I- 526	28.492	L- 4436	R- 7556 14	0.12	0	day	dry	RE	Following too Closely	Motor Unit (Stopped)
350	24550315	08/02/24	I- 526	28.508	L- 4436	R- 7556 14	0.136	0	day	dry	RE	Following too Closely	Motor Unit (Stopped)
351	22516802	03/14/22	I- 526	28.514	L- 4436	R- 7556 14	0.142	2	night	dry	RE	Following too Closely	Motor Unit (In Transpo
352	22576540	11/01/22	I- 526	28.517	L- 4436	R- 7556 14	0.146	0	day	dry	RE	Following too Closely	Motor Unit (Stopped)
353	22576556	11/17/22	I- 526	28.522	L- 4436	R- 7556 14	0.15	0	day	dry	RE	Following too Closely	Motor Unit (Stopped)
354	22506469	01/28/22	I- 526	28.524	L- 4436	R- 7556 14	0.152	0	day	dry	RE	Swerving to Avoid Object	Motor Unit (In Transpo
355	20515867	03/12/20	I- 526	28.525	L- 4436	R- 7556 14	0.153	0	day	dry	RE	Following too Closely	Motor Unit (Stopped)
356	24542523	06/20/24	I- 526	28.527	L- 4436	R- 7556 14	0.155	0	day	dry	RE	Following too Closely	Motor Unit (Stopped)
357	20546983	08/26/20	I- 526	28.529	L- 4436	R- 7556 14	0.157	0	day	dry	SS	Improper Lane use/change	Motor Unit (In Transpo
358	22549777	07/28/22	I- 526	28.533	R- 7556 14	L- 4436	0.159	1	day	dry	RE	Following too Closely	Other - non Collision
359	22534148	05/20/22	I- 526	28.534	R- 7556 14	L- 4436	0.158	0	day	dry	RE	Following too Closely	Motor Unit (In Transpo
360	24513237	03/07/24	I- 526	28.541	R- 7556 14	L- 4436	0.151	1	day	dry	RE	Following too Closely	Motor Unit (Stopped)

Query Crash List
CHARLESTON

AADT: 67514

Functional Class: Urban - Principal Arterial - Interstate
01/01/2020 through 12/31/2024

MP 23.81 to 29.12 (Length = 5.31 miles)

Total Crashes: 399 Fatal Crashes: 0 Serious Inj Crashes: 4 Other Inj Crashes: 100 PDO Crashes: 295 Light: 299 Dark: 100 Dry: 341 Wet: 57

OBS	Crash #	Date	Main	MP	Base	Second	BDO	Max Inj	Light	SFC	MAC	Probable Cause	Harmful Event
361	21573375	11/06/21	I- 526	28.56	R- 7556 14	L- 4436	0.132	0	day	wet	RE	Following too Closely	Motor Unit (In Transpo
362	23555389	08/18/23	I- 526	28.561	R- 7556 14	L- 4436	0.131	0	day	dry	SS	Improper Lane use/change	Motor Unit (In Transpo
363	24545506	07/15/24	I- 526	28.566	R- 7556 14	L- 4436	0.126	0	day	dry	RE	Following too Closely	Motor Unit (In Transpo
364	23589362	12/13/23	I- 526	28.571	R- 7556 14	L- 4436	0.121	0	night	dry	RE	Driving too Fast for Con	Motor Unit (Stopped)
365	22567353	08/04/22	I- 526	28.578	R- 7556 14	L- 4436	0.114	1	day	dry	RE	Distracted/Inattention	Motor Unit (In Transpo
366	23562058	09/05/23	I- 526	28.587	R- 7556 14	L- 4436	0.105	0	day	dry	RE	Following too Closely	Motor Unit (In Transpo
367	23564246	10/01/23	I- 526	28.594	R- 7556 14	L- 4436	0.098	0	day	dry	RE	Following too Closely	Motor Unit (In Transpo
368	24558452	09/07/24	I- 526	28.595	R- 7556 14	L- 4436	0.097	1	day	wet	RE	Driving too Fast for Con	Ditch
369	23555574	08/25/23	I- 526	28.596	R- 7556 14	L- 4436	0.096	0	day	dry	RE	Following too Closely	Motor Unit (Stopped)
370	23272421	09/17/23	I- 526	28.598	R- 7556 14	L- 4436	0.094	0	night	wet	RE	Driving too Fast for Con	Motor Unit (In Transpo
371	20539300	07/22/20	I- 526	28.6	R- 7556 14	L- 4436	0.092	0	day	dry	RE	Following too Closely	Motor Unit (Stopped)
372	22522238	04/03/22	I- 526	28.603	R- 7556 14	L- 4436	0.089	0	day	dry	SS	Improper Lane use/change	Motor Unit (In Transpo
373	21585165	11/22/21	I- 526	28.61	R- 7556 14	L- 4436	0.082	0	night	dry	RE	Following too Closely	Motor Unit (In Transpo
374	23504524	01/04/23	I- 526	28.615	R- 7556 14	L- 4436	0.077	0	day	dry	none	Aggressive Operation	Embankment
375	22551297	07/29/22	I- 526	28.615	R- 7556 14	L- 4436	0.077	0	day	dry	RE	Following too Closely	Motor Unit (In Transpo
376	23527526	03/30/23	I- 526	28.618	R- 7556 14	L- 4436	0.074	2	day	dry	RE	Cell Phone	Motor Unit (Stopped)
377	24528684	04/30/24	I- 526	28.622	R- 7556 14	L- 4436	0.07	0	day	dry	RE	Following too Closely	Motor Unit (In Transpo
378	21559578	09/10/21	I- 526	28.625	R- 7556 14	L- 4436	0.067	0	day	dry	RE	Driving too Fast for Con	Motor Unit (In Transpo
379	22526579	05/03/22	I- 526	28.631	R- 7556 14	L- 4436	0.061	0	day	dry	RE	Following too Closely	Motor Unit (Stopped)
380	21508681	02/20/21	I- 526	28.638	R- 7556 14	L- 4436	0.054	0	night	dry	none	Over-steering	Highway Traffic Sign P
381	21510607	02/20/21	I- 526	28.651	R- 7556 14	L- 4436	0.041	0	day	dry	Angle	Improper Lane use/change	Motor Unit (In Transpo
382	22553899	07/28/22	I- 526	28.653	R- 7556 14	L- 4436	0.039	0	day	dry	RE	Driving too Fast for Con	Motor Unit (In Transpo
383	22529617	04/30/22	I- 526	28.659	R- 7556 14	L- 4436	0.033	2	day	dry	none	Other (roadway)	Other (fixed)
384	24545540	07/18/24	I- 526	28.663	R- 7556 14	L- 4436	0.029	1	day	dry	RE	Following too Closely	Motor Unit (Stopped)
385	22503062	01/13/22	I- 526	28.669	R- 7556 14	L- 4436	0.023	0	night	dry	RE	Under the Influence	Motor Unit (In Transpo
386	21577314	11/13/21	I- 526	28.669	R- 7556 14	L- 4436	0.023	3	night	dry	HO	Under the Influence	Ran off Road Left
387	20543257	08/19/20	I- 526	28.677	R- 7556 14	L- 4436	0.015	0	day	dry	RE	Following too Closely	Motor Unit (Stopped)
388	22584042	11/03/22	I- 526	28.677	R- 7556 14	L- 4436	0.015	1	night	dry	SS	Improper Lane use/change	Motor Unit (In Transpo
389	20532269	06/20/20	I- 526	28.682	R- 7556 14	L- 4436	0.01	0	day	dry	SS	Over-steering	Motor Unit (In Transpo
390	23539015	06/04/23	I- 526	28.684	R- 7556 14	L- 4436	0.008	0	day	dry	SS	Improper Lane use/change	Motor Unit (In Transpo
391	20532398	06/20/20	I- 526	28.711	R- 7556 14	S- 56	0.019	1	day	wet	RE	Driving too Fast for Con	Motor Unit (Stopped)
392	20505017	01/10/20	I- 526	28.72	R- 7556 14	S- 56	0.028	0	day	dry	RE	Following too Closely	Motor Unit (In Transpo
393	23578386	11/11/23	I- 526	28.726	R- 7556 14	S- 56	0.034	0	day	wet	RE	Unknown	Motor Unit (Stopped)
394	24578961	11/26/24	I- 526	28.751	R- 7556 14	S- 56	0.059	0	night	dry	SS	Improper Lane use/change	Motor Unit (In Transpo
395	24578989	11/26/24	I- 526	28.751	R- 7556 14	S- 56	0.059	0	night	dry	SS	Improper Lane use/change	Motor Unit (In Transpo
396	24516129	03/12/24	I- 526	28.875	S- 56	R- 7556 14	0.001	0	day	dry	SS	Improper Lane use/change	Motor Unit (In Transpo
397	20539281	07/14/20	I- 526	28.893	S- 56	US 17	0.017	0	day	dry	Angle	Improper Lane use/change	Motor Unit (In Transpo
398	23522804	04/13/23	I- 526	29.019	S- 56	US 17	0.143	0	night	wet	none	Driving too Fast for Con	Bridge Rail
399	22522098	04/08/22	I- 526	29.073	S- 56	US 17	0.196	0	day	dry	RE	Following too Closely	Motor Unit (In Transpo